



Cabin Rules & Regulations

- Smoking is prohibited in the cabins
- Pets are not allowed in or near the cabins
- No keg beer allowed in the cabins
- Quiet hours are 10:30 p.m.-6:00 a.m.
- Non-registered guests must leave by 10:30 p.m.
- Responsible party of record will be held responsible for any damages or theft that occurs
- No one under the age of 21 is allowed to occupy a cabin unless that minor is accompanied by a parent or legal guardian, 21 years or older
- No camping trailers or tents may be at the cabins; please use the campground
- Park Rangers are given authority to refuse rental privileges and rescind any and all rental permits for cause
- All Park Rules & Regulations of the Harrison County Conservation Board are in effect

IN CASE OF EMERGENCY, during office hours contact the Harrison County Conservation Board at 712-647-2785. During non office hours, contact the Harrison County Communications Center at 712-644-2537 and request a Park Ranger to be paged.

Firewood:

- No out-of-county firewood allowed
- Firewood can be purchased from the Park Ranger on duty, office or Camp Host

Renters Supply:

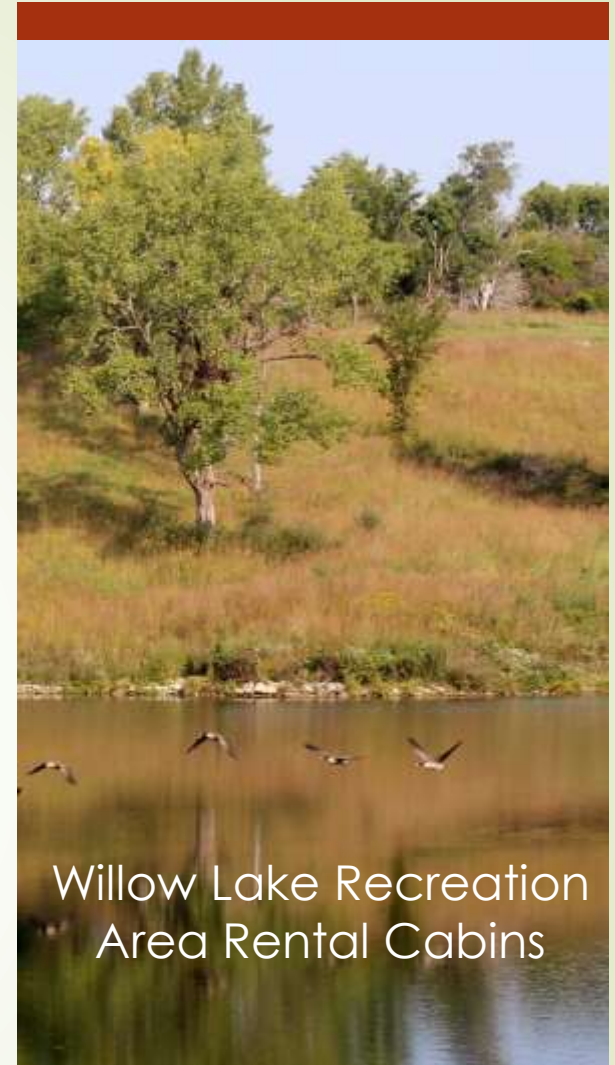
- Bedding, pillows, extra blankets
- Bath & dish towels, soap, toiletries
- Lawn chairs, movies, flashlights

Directions

Willow Lake Recreation Area is located 6 miles northwest of Woodbine, Iowa. From I-29, take Highway 30 east and continue to Woodbine. Turn left onto F20L (Easton Trail) and follow the signs. To get to the camping cabins, take the main entrance to the park (2715). The deluxe cabins are located on the west side of the lake (2693).



Harrison County
Conservation Board Office
and Nature Encounter Center
Hours:
Monday-Friday
8:00 a.m.-4:30 p.m.



Willow Lake Recreation Area Rental Cabins

Harrison County Conservation Board
2725 Easton Trail
Woodbine, IA 51579
712.647.2785
HarrisonCountyParks.org
HCCB@HarrisonCountyParks.org

CAMPING CABINS:

Red Oak, Hemlock & Black Walnut
\$55 per night



The camping cabins are a one room facility with a full-size bed, a set of bunk beds, and a futon that converts to a full bed. Each will accommodate up to 6 people. Camping cabins include: a microwave, small refrigerator, folding table, heat and air conditioning, mop and broom. A picnic table, campfire ring, campfire grill, and water hydrant are provided outside. A unisex latrine is located near the cabin. Modern flush toilets and showers are located in the adjoining campground and may be used by renters. (Shower house open April through October).

*Camping cabins are closed January 1st through March 31st.

DELUXE CABINS:

King & Scotch Pine \$140 per night
White Pine \$110 per night



King cabin has three bedrooms, a great room with TV/DVD, full bath, full kitchen, a large deck with picnic tables, and a charcoal grill. Maximum capacity is 12 people. Two bedrooms have a queen bed and the third bedroom contains two queen beds. The great room has two futons that convert to double beds.



Scotch Pine cabin has two bedrooms, sleeping loft, full bath, full kitchen, living area with TV/DVD, a covered deck with picnic tables, and a charcoal grill. Maximum capacity is 12 people. Each bedroom has a queen bed. The loft has four single beds and two futons that convert to full beds.



White Pine cabin has two bedrooms, full bath, full kitchen, living area with TV/DVD, and a covered deck with picnic tables and a charcoal grill. Maximum capacity is 8 people. Each bedroom has a double bed/single bunk and the living room has a futon that converts to a full bed.

*Deluxe cabins are equipped with a toaster, microwave, coffee maker, pots and pans, heat and air conditioning, and cleaning supplies.

A campfire ring is also located next to each cabin.

**Cabin Reservations are taken
online at HarrisonCountyParks.org**

***2 night minimum stay for
weekends year round**

***3 night minimum stay for Memorial
Day, July 4th and Labor Day
holidays**